

# The Ellerbe Creek Journal

Published by the Ellerbe Creek Watershed Association (ECWA)

[www.ellerbecreek.org](http://www.ellerbecreek.org)

News from the Watershed

Spring 2006

## MARK YOUR CALENDARS:



### May 9<sup>th</sup> is Whole Foods Market 5% Charity Day. Proceeds benefit ECWA

Larry Brockman and Jane Finch

Here is a great way for you to support the Ellerbe Creek Watershed Association while purchasing quality food, drink, and other sundry items. The Whole Foods Market in Durham will donate 5 % of net sales that occur on Tuesday, May 9 to ECWA.

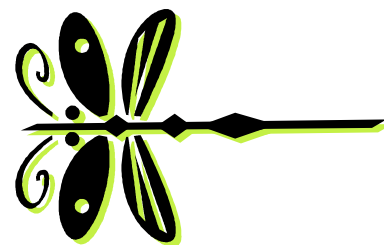
Quoting from its website, the people at Whole Foods are "intimately connected to the health and economy of each community we serve, and feel keenly our responsibility to give back to those communities in meaningful ways. We are committed to donating at least five percent of our annual net profits to charitable causes." Thanks to Tony Tschopp and Josh Rose, who made a great presentation to Tammi Floccare and other staff there last fall, ECWA was chosen as one of the three nonprofit organizations to be granted a "5% Day" in 2006. ECWA stands to make several thousand dollars from this event ***if our supporters do some serious shopping that day and spread the word throughout the community to encourage others to do the same!***

### Ways you can help this become a major fundraising event:

- Stock up on bulk items and save more in the moment (e.g., if you buy 6 bottles of wine you get 10% off). Also, you can order items in bulk at any time and pick them up at the discount price on May 9.
- Purchase specialty items like gifts, bug spray, herbal sunscreens, vitamins, and other staples.
- Save your ordinary weekly shopping for that day.
- Notify your networks of contacts – church groups, daycare groups, biking clubs, friends, business and workplace associates, etc – now, and again the week before the event.
- Spread messages sent out you from the ECWA listserv to other listservs you are subscribed to.

Be on the lookout for an ECWA table at the store on May 6, the Saturday before the event, as well as on Tuesday. We plan to debut some new items like bumper stickers and magnets, and will generally inform the public of our efforts.

Thanks in advance for any promotional assistance you can provide, and we'll see you on Tuesday May 9!



---

## ECWA EARTH DAY ACTIVITIES



**Saturday April 22, 2006**

Diana Tetens

ECWA will be hosting two Earth Day events, one at our Glennstone Preserve and one at the Durham Earth Day Festival.

### **Glennstone Work Day 9am-1pm**

We'll be working on planting and beautifying the detention basin and clearing trails. It should be an exciting day as the detention basin and trails begin to really take shape. Come for any part of the day you can. We'll provide snacks and drinks.

### **Durham Earth Day Festival Booth 11am-5pm**

West Point on the Eno Park  
5101 N Roxboro Rd., Durham

ECWA will be one of the many environmental organizations hosting a booth at this annual event. Expect an eclectic blend of music, puppet shows, storytelling and other festivities. ECWA will be letting folks know about our work and current projects, signing up new members and offering birdhouse painting and sales. We're still looking for help with booth staffing. If you'd like to spend a few hours talking about ECWA, helping oversee birdhouse painting and taking in the festivities, please call Diana Tetens at 698-8161.



Great blue herons nest in large groups, called rookeries. There is a rookery near the Glennstone preserve. If you are out there and look up you may spot these majestic birds flying to or from

---

---

their nests.

---

## NEW PEARL MILL PRESERVE

Kim Curtis

With the generous donation of three acres of land by the Duke Energy Corporation, we now have our third urban preserve in Durham. Located along the East Branch of the South Ellerbe Creek, the land is part of a corridor of wetlands and floodplain woods bounded by the Trinity Park, Old North Durham and Duke Park neighborhoods. It stretches alongside the popular South Ellerbe Creek Trail, just south of Green Street. The property abuts the public greenway, and now that we have hacked the olive out, the public has access to the creek. It wasn't even visible before. With this acquisition ECWA now owns and manages over 100 acres of greenspace in Durham.

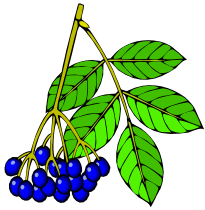
Strong neighborhood interest in the corridor was voiced at a Greenway Community Forum two years ago, and ECWA's founder Stephen Hiltner and others nursed the acquisition to fruition. The property was named the Pearl Mill Preserve because of the old textile mill - Pearl Mill - that is just upstream from the preserve, near the headwaters of the Eastern branch of South Ellerbe. The mill has been converted to apartments and the old tall smokestack is visible from all around and there are mill houses just east of the creek. In short, the name reflects this history, and folks in the area call the creek Pearl Mill creek.

Shortly after closing the deal, ECWA members and neighbors living near the new preserve enthusiastically discussed the opportunities and concerns it now opens up. These include restoring native habitat, creating nature trails, building an observation platform over a wetland area, cultivating flowers along the greenway, building a kiosk to post greenway ecological news in both English and Spanish, garbage cans, places to access the creek from the greenway trail, and concerns with erosion, mowing and safety.

There has been an outpouring of energy for the first phase of native habitat restoration at the preserve. We have had a total of four workdays since February 23rd when the transfer of property was formalized, with about 80 people participating! Many, many thanks to all of you. Thanks especially to members of Beth El Synagogue who formed the core group for the second workday on March 5<sup>th</sup>, and to the 20+ members of Duke's AEPi Fraternity

who rolled out of bed early on April 1<sup>st</sup> for the most recent workday. ECWA members Steve and Edie Cohn, Joanne Abel, Leanne Nelson and Fred Broadwell did a great job working with these groups. It has been a true community effort.

The first phase of the restoration work has involved cutting and killing the two most dominant invasive species: Thorny Olive and Japanese Privet. In doing this, not only have we let in light and made room for other species to take hold, but we have cleared sight lines to the creek, revealing the lovely little bluffs on the opposite shore – which almost nobody knew about!



### American Elderberry

*Sambucus canadensis*

Occurs in most of the continental United States, except for portions of the Northwest.

Grows 8-12 feet high

Blooms white during summer, bears purplish black fruit in the fall

Attracts birds and butterflies

The second phase, which we've just begun, includes the arduous tasks of cutting and pulling English Ivy, Japanese Honeysuckle, Euonymus, and Multiflora Rose. We'll be working on this awhile...We have also planted live stakes of native Silky Dogwood and American Elderberry (harvested near 17 acre Woods) along the banks of the creek and the small tributary that runs into it. For now they all have pink tape so we can keep track of them to water as needed while they get established. Look for them when you visit and you will see small leaves already sprouting from the Elderberry stakes. Both species have lovely lacy white blossoms.

## Native Plants in the Watershed:

### American Elderberry

Kim Curtis

Elderberries occur in both Europe and North America and have a charmed reputation on both continents. In European folklore, fairies and elves would appear if you sat underneath an elder bush on midsummer night. The lovely elder was said to possess potent magic, with the ability to drive away

witches, and kill serpents. Sleeping under the elder was also said to produce a dream-filled sleep—and indeed, the fragrance is actually mildly sedative. The flowers and fruit have medicinal properties, and were used by Native Americans and Europeans as a diuretic and a detoxifier. The flowers have been used in cosmetics since ancient times, and elder flower infusion is said to cleanse the skin, lighten freckles, and soothe sunburn.

In addition, the plant is edible. The flowers make wonderful fritters. Use your favorite tempura or pancake batter, but make it light and mild as the flavor is delicate. Sauté. The berries are a piquant addition to muffins, cakes and breads and the flowers make a pleasant tasting tea, especially with mint. The berries have very large amounts of potassium and beta-carotene, as well as sugar and fruit acids, calcium, phosphorous and vitamin C.

Note: if you wish to harvest, only do so where there are well-established plants!

## SSSSNAKES!

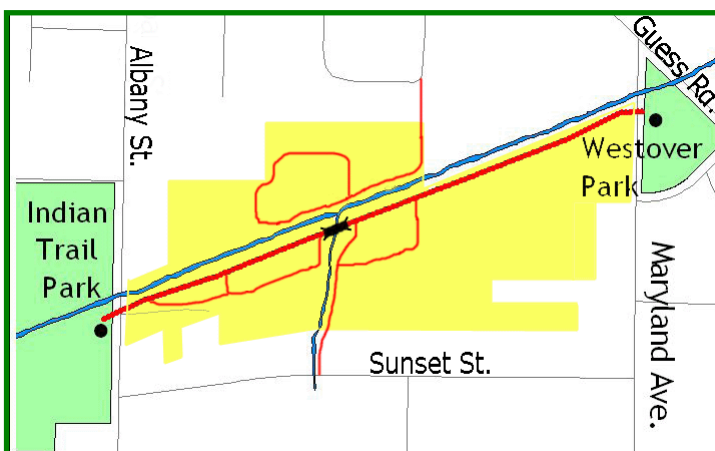
North Carolina does not have very many venomous (poisonous) snakes. The venomous snakes we do have are rarely encountered because they tend to avoid people whenever possible. Most snakes spotted by people are actually beneficial, helping to keep down rodent populations. The most commonly spotted snake near residences is the rat snake. This large snake is usually black in coloration and can reach eight feet in length! Like the majority of snakes in the Piedmont the rat snake prefers to retreat rather than bite. A snake bite from a non-venomous can still be painful and requires a doctors attention to prevent infection. The best thing to do to avoid a snake bite is to watch where you put your hands when reaching into dark places where snakes like to hide. Most snake bites occur on the hands when people pick the snake up. This is not recommended.



## CONNECTING THE 17 ACRE NATURE PRESERVE

Larry Brockman  
ECWA, President

The ECWA 17 Acre Nature Preserve, nestled between Indian Trail Park and Westover Park (see map below), is bisected by the Ellerbe Creek, with approximately 13 acres on the south side of the creek and 4 acres on the north side. Many ECWA members and the public in general walk, run and bike the paved West Ellerbe Creek Trail that connects the two aforementioned parks. Likewise, many outdoor enthusiast venture into the ECWA's 17 Acre Nature Preserve via ECWA's unpaved nature trails in order to experience a more natural environment and to extend their outing. The ECWA hopes that in the next year or two you will have even more options for your outdoor exercising. The 4 acres on the north side of the creek includes a short nature trail. However, it is not easily accessible from W. Ellerbe Creek Trail. Although not encouraged, there are signs that indicate a few adventuresome folks have used the sewer pipe as way to make it to the other side of the creek. Currently, we are encouraging people to access the 4 acres on the north side of the creek via Carolina Ave, which dead ends into the ECWA nature preserve. ECWA is in the process researching options for funding a pedestrian bridge from the W. Ellerbe Creek Trail over to the north side for easy access to the preserve and nature trail. If you have ideas or comments related to getting the pedestrian bridge installed please contact Larry Brockman at 286-3150.



Red = Exiting Trails

## PUT THE BIRD BACK

Diana Davis

It's spring, the birds are building nests and soon will come babies to raise, followed shortly by the rush of fledgling birds being kidnapped and taken to wildlife rehabilitators. What are fledglings and how can you help stop these abductions? And what do you do if you do find a baby bird in need?



Fledgling birds are baby birds who are full sized, feathered (although their tail feathers are usually shorter than adults), but not yet coordinated and muscular enough to fly away. Like toddlers who fall down while learning to walk, these birds crash into shrubbery and flutter while learning to fly. People often assume these baby birds have fallen from the nest and are unable to survive and they scoop them up. In fact this is a totally normal stage of development and the parent birds are usually nearby, watching in dismay as the large predator (that would be you) takes their offspring that they are lovingly feeding and teaching all about how to be a big bird.

The fledgling stage of bird development does represent a very dangerous time for birds but it is also a critical time for learning. They are learning how to avoid dangers (hopefully), how to find natural food sources, how to sing their parents song, find mates, hold a territory, even navigate by the stars for migration; all things that humans are unable to teach birds. In some species the offspring stay with the parents while the parents raise the next brood. This learning experience not only reduces the workload of the parents but also helps the offspring learn how to raise babies of their own, increasing the reproductive success of both generations.

So what can you do to help fledglings? Try to keep indoor/outdoor cats inside as much as possible during baby bird season (from now till October), especially at night when sleeping fledglings are perched low in bushes. If you see a bird on the ground, don't instantly scoop it up. Wait and watch. If the bird looks perfectly healthy except that it can't fly, it's probably a fledgling and the parents are nearby, waiting for the predator (that would be you) to leave.

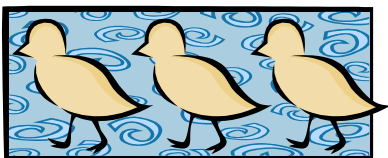
Occasionally you do find a bird that needs help. If you see any obvious wounds, if your cat brought the bird in (even if it appears uninjured), if it does not have feathers or cannot walk, please call a licensed wildlife rehabilitator. They can help you determine if the bird does need attention and help you find someone who can



take care of it. In Durham you can call **Piedmont Wildlife Center at 572-WILD (572-9453)**. Elsewhere, contact your state department of fish and wildlife (or fish and game or some variation on that name) or check online with the International Wildlife Rehabilitation Council, or the National Wildlife Rehabilitation Association.

If you do find an injured bird please do not try to care for it yourself. Keep in a warm, dark, quiet place while you try to find help. Do not offer it food or water unless it is a hummingbird. Hummingbirds must be fed every 15-30 minutes during daylight hours (use 1 part sugar to 4 parts water, at room temperature, offered in a syringe or eyedropper, try not to get any on its feathers). Licensed rehabilitators have training to help them determine which foods to feed birds (NOT MILK), to keep from imprinting young birds and to maximize their post release chances of survival. Birds require a lot of specialized care - baby birds may require feeding as often as every 15 minutes during daylight hours! Also, it is illegal, under federal law, for individuals to have a wild bird in their possession for more than 48 hours.

Fledgling birds are a normal part of nature's cycle. While we humans want to protect all babies from dangers, including predators, nature must weed out the weak in order for each species to stay strong. Remember we cannot teach baby birds how to sing, how to avoid predators, how to establish and hold a territory and all of those other skills the parents teach. We can take injured and truly orphaned birds and give them a chance of survival but their odds are not as good as those offspring raised by their own parents.



## GLENNSTONE NATURE PRESERVE

Larry Brockman, Kim Curtis, and Diana Davis

### Trail Clearing

On Thursday, April 13, the existing nature trails in the 83 acre Glennstone Nature Preserve were extended and widened to make the trails more welcoming to hikers and easier to maintain. ECWA hired a contractor with a Bobcat front-end brush cutter to expedite the extensive trail building - which up to this point was primarily done by the hands of volunteers. The contractor also cleared a couple small areas to allow for native prairie grasses and wild flowers to return. When you walk the new wider trails you may feel that the trails are too wide, but rest assured that the existing young forest will recover and close in quickly.

Although the brush cutter did an incredible amount of work in a short time, we will still need volunteers to help remove debris and small stumps and complete small segments of the trail. Your first opportunity to help is on Sat., April 22 from 9 am – 1 pm. We also plan to put in trails signs and develop maps by fall of 2006. Eventually we hope to have trail "stewards" to help maintain the trails. If you have questions, concerns or suggestions about the Glennstone Nature Preserve trails, please contact Larry Brockman, at 286-3150 or [larry@ellerbecreek.org](mailto:larry@ellerbecreek.org).

### Prep Work for Trail Improvements

On the cold morning of November 19<sup>th</sup>, over 20 people gathered out at Glennstone on the edge of ECWA's nature preserve to pick up trash, clear the entrance of our main trailhead and lay a 300 foot trail of mulch from the street to the trailhead. Glennstone residents were joined by others from elsewhere in the watershed and this intrepid crew worked from 9:30 until 1:00 – perhaps a record in the history of second Saturday workdays! This was followed by a neighborhood barbecue organized by Glennstone residents, and a hike through the preserve along the trail down to the Ellerbe – a first time experience for many residents.

In March another intrepid group of Glennstone residents, ECWA members from other parts of the watershed and volunteers from Democrats in Action took advantage of the opportunity to "rescue" plants that would be in the path of the planned trail widening. Volunteers all got to take home some of their finds to their own gardens. Some were ambitious – removing small trees and

blueberry bushes, others went for the subtle beauty of small plants including mosses, lichens and partridge berries but everyone went home tired and happy.

---

## ECWA DOES EDUCATIONAL OUTREACH IN DURHAM'S PUBLIC SCHOOLS

Kim Curtis

### Eastway Elementary School

Eastway Elementary School has a potentially wonderful educational asset flowing along one side of school property. It's called Goose Creek. Right now it doesn't look like much. In fact, it looks just awful, but starting in August, under the direction of Perry Suggs, the North Carolina Ecosystem Enhancement Program (NCEEP) will be breaking ground to help restore life in and along the creek. They'll be entirely removing the straight concrete canal through which the waters currently rush, restoring meander and planting native species along its banks.

ECWA board member Kim Curtis, working with Laura Smith of the City's Stormwater Services and Star Sampson, Eastway's principal, have been organizing to help teachers and students prepare to study the effect of these changes. In January, Laura Smith held a two-day training to help teachers at the school integrate water issues into their curriculum. Perry Suggs came in to give an overview of what the students can expect to witness and study as water quality improves and life – from a greater diversity of aquatic animals on up the food chain - returns to the creek. Brad Herring from the Museum of Life and Science led part of the workshop as well. To help with equipment, ECWA will purchase water quality testing kits, waders, and nets for the school.

### Durham School of the Arts

Duke student, Leslie Kleczek, who is pursuing her masters in Environmental Management at Duke's Nicholas School of the Environment, has begun to work with students in the Environmental Club at Durham School of the Arts. DSA, a combined middle and high school not far from the new Pearl Mill Preserve, has a great greenhouse and club members have just cleaned it out. They plan to cultivate native plants from seeds ECWA members have collected from around the watershed. Their hope is to create an Ellerbe brand of native plants which could be used in our preserves and wetland

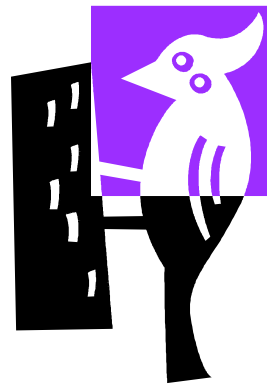
gardens, in gardens on school grounds, and perhaps could be sold to raise money for the club itself.

If anyone is interested in working with us, please contact board member Kim Curtis at 63-8943 or [kim@ellerbecreek.org](mailto:kim@ellerbecreek.org).

---

## FOR THE BIRDS

Diana Davis



Winter has ended and summer is coming. People do many things to mark the changing of the seasons – trade their winter coats for summer sandals, tune up the lawn mower, and for some, take down their bird feeders. But should you only feed birds in the winter or does summer feeding have it's merits, too?

The argument against summer feeding centers on food supply. Some people argue that you feed birds in winter because the natural food supply is low. While the natural food supply does increase during summer months so does the birds need for food – in the form of baby birds to be fed. Summer is a frenzy of nesting for most bird species and nesting means more mouths to feed. While natural food supplies are on the rise so is demand.

Another argument for year round feeding is habitat. Wild birds in truly wild habitats may not need to be fed but the suburban and urban habitats that make up the Ellerbe Creek Watershed are hardly wild. Garden plantings that please humans are not always the best choices to feed wildlife. Large expanses of lawn may look nice to some people but they are barren deserts to birds looking for seeds or insects.

On the other hand feeding wildlife artificially concentrates birds around feeders, leaving them vulnerable to predators and disease. Bird predators such as Cooper's Hawks and domestic cats learn that bird feeders equal lunch and they will often scope out yards with feeders. While a Cooper's Hawk will hunt around a feeder for a few days the birds will get wise and move on and so will the Hawk. Domestic cats usually do not. Neighborhoods with large numbers of free roaming cats should seriously consider them when placing

feeders, choosing locations that don't allow the cats cover to sneak close to the feeders.

Disease spread is also a concern. The artificially high concentration of birds at a feeder can allow for rapid disease spread. Keeping feeders clean will help (more on this later), as will watching for diseased birds. If you see a diseased bird it is recommended that you take your feeders down for 10 days to 2 weeks to allow the birds to disperse. The most common, visible disease is House Finch Eye Disease. This disease is readily visible as swellings around the eye. Pox is another disease that is also easily visible as swellings on the face. Some birds can recover spontaneously from both of these diseases.

Ornithologists and bird lovers debate the merits of supplemental feeding of birds but they all agree that bird feeders need to be cleaned regularly to prevent the spread of disease. A dilute solution of soapy water (Dawn dish detergent is safe) or dilute bleach, and a brush are usually all that's needed. Be sure to rinse the feeders well and let them dry before refilling them. The birds won't vacate your yard just because you took the feeder down for a day to clean it.

Feeding the birds can be very rewarding, bringing these wild creatures close enough to be watched. Supplementing wild foods helps to reduce the detrimental affects of the typical suburban or urban habitat. During the summer this supplement helps birds raise their offspring. It can have the detrimental affects of increasing the spread of disease and increasing the risk of predation. Whether you feed during the summer is up to you to decide.

---

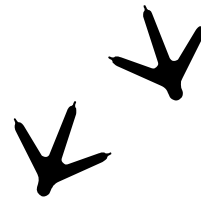
## ECWA WISH LIST

The following lists some priority needs we have in order to support and more effectively serve our membership and accomplish our goals. Please let us know if you would like to assist us in any of these endeavors by contacting Diana Tetens, 698-6181. We would welcome any level of activity you would like to contribute!

- Kiosk Info Coordinator – we need someone to create environmental education information every 3 months for our kiosk at the 17 acre woods. This might include rotating pictures of seasonal critters: birds, butterflies, snakes,

dragonflies, spiders, etc., updates on volunteer workdays, how native plants are doing, and other interesting facts and observations that might inform, surprise and delight. This could be a fun project for a parent/child team, or a pair of friends or, of course, for an individual.

- Naturalist/Botanist – we would like to find someone who has expertise in plant identification and could help out on a couple of exotic weed removal workdays (i.e., show others the good vs. bad plants) and/or lead a couple nature walks throughout the year.
- Board Members – we are looking for a few new board members. What's needed is simply a commitment to bring your own energy, interests and skills to help strengthen ECWA.



# The Ellerbe Creek Journal

Published by the Ellerbe Creek Watershed Association (ECWA)

[www.ellerbecreek.org](http://www.ellerbecreek.org)

## News from the Board of Directors

Spring 2006

### NEW EXECUTIVE DIRECTOR!

### AND NEW OFFICE SPACE!

Diana Davis

Early this year ECWA hired a new Executive Director, Diana Tetens. Diana comes to ECWA with experiences in conservation and education that should complement the expertise of the board members and help to move ECWA forward towards its goals of a greener Durham. We also received donated office space and a sign at 1308 Broad St. from Mike Shiflet and Cheryl Sweeny. A big thank you to them for making this space available.

### Letter from the Executive Director

Diana Tetens

Hello ECWA supporters and friends! My name is Diana Tetens and I've been serving as ECWA's Executive Director since February 1 of this year. I am delighted to be working with ECWA. Board member Steve Cohn really hit the nail on the head when he described ECWA as a small group that gets an incredible amount done.

I see my role as helping facilitate the work of ECWA; be it through fundraising, planning, research, outreach or whatever else needs to get done. My background includes work in variety of conservation and education settings including a position as a Watershed Coordinator with the NC Division of Water Quality, and an MS in Conservation Ecology and Sustainable Development.

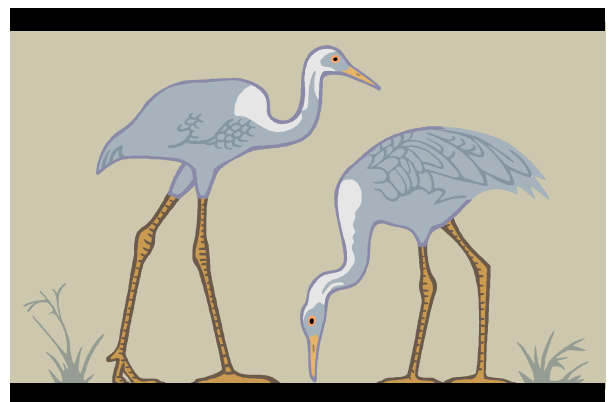
I'm currently in the process of getting acquainted with my new position and getting to know the ecological, cultural, and human factors that make the watershed the special place it is. On the human note, I look forward to meeting and working with many of you in the coming months. Until then, please call if you have any questions, suggestions, or would like to become more involved with ECWA. I would love to hear from you. I can be reached at 919-698-8161 or via email at [dianat@ellerbecreek.org](mailto:dianat@ellerbecreek.org).

### MEMBERSHIP UPDATE

Jane Finch

As of our 2005 membership drive last fall I have taken on the chairpersonship of ECWA's membership committee. Prior to that Tony Tschopp, who is now happily residing in Hawaii with wife Sandy, was diligently keeping our database updated. I hope to improve our ability to increase membership recruitment, renewals and donation receipts with the help of Steve Cohn and any other game volunteers who would like to join us. If you are willing to help on the membership committee, please do let me know!

At the end of 2005 we had 57 members with current paid dues and a total of \$2,765 in membership dues and donations. We would love to see these figures double in 2006! Since 1998, when ECWA was founded, 143 people have made contributions, plus another 50 Glennstone residents whose initial memberships were facilitated by developer Craig Morrison. Now that we have a "second wind" with the hiring of new Executive Director Diana Tetens, an energetic board, and the involvement of neighbors in Trinity Park and Old North Durham thanks to the recent acquisition of the Pearl Mill Reserve on the east branch of South Ellerbe Creek, we expect to make still more good things happen in the Ellerbe watershed. We certainly hope all of you who have supported ECWA in the past will renew and continue that support and help keep us moving forward.



# The Ellerbe Creek Journal

---

Finally, I'd like to give special kudos to a number of our members who have consistently donated, even when our infrastructure was at a bare minimum.

They almost had to say, "Hey, wouldn't you like some money??"

**Five years of giving:** Tom and Kim Miller, Alan and Erika Stone, Steve Hiltner.

**Four years of giving:** Barbara Beaman, Dale Evarts, Ned and Betsy Kennington, Don Moffitt and Sidney Cruze, Leann Nelson and Glenn Martin, Ann Marie Rasmussen, Lorisa Seibel, and Tony and Sandy Tschopp.

We thank these members, and all of our members over the years, and hope you will stay with us for the sake of a healthy Ellerbe Creek and contiguous wild spaces!

In addition to updating your memberships for 2006—which you can do by way of the form on the back of this newsletter—you can donate to ECWA by shopping at **Whole Foods** Market on Tuesday, May 9. Whole Foods chose ECWA as a beneficiary of one of its three "5% Days" in 2006 and will donate 5% of its sales that day to us. Please put it on your calendar (and then it would be great if you could avoid any grocery shopping for a week or two before!).

---

## Fall Festival

Also in the works is ECWA's first, and hopefully annual, **Fall Festival**. This will be a fun day in Indian Trail Park to thank our supporters and enjoy the fruits of our labors. It will include eats from Whole Foods, face painting, T-shirt designing, rubber ducky races if the creek is high enough, and more. Stay tuned for more info.

---

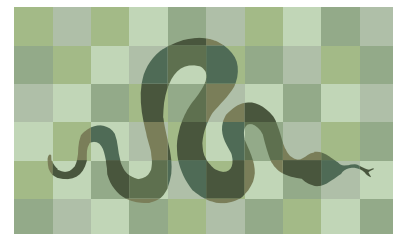
---

## New Board Members

ECWA would like to welcome new board members Diana Davis and Steve Cohn on board.

**Steve Cohn** is the Director of Duke University Press and a member of the Board of Directors of the Watts-Hospital-Hillandale Neighborhood Association, for which he serves as chair of the Parks Committee as well as the liaison with ECWA. Steve is a frequent user of the West Ellerbe Creek Trail and got involved with ECWA because he was tremendously impressed by the vast amount ECWA was accomplishing with such a small group of active volunteers. He brings to the board not much knowledge of the natural environment, but lots of interest in the functioning of small organizations as they grow and develop.

**Diana Davis** is a professional nature photographer with a strong background in biology including degrees from NC State and UCLA. Both in her job and in her work with ECWA she has a strong desire to show others the natural beauty of the world around them. She feels that exposure to the natural environment is possible even in a relatively urban setting and that this exposure is important to the mental health of individuals and the community.



**THREE WAYS TO SUPPORT ECWA**

1. **Online:** Go to [www.ellerbecreek.org](http://www.ellerbecreek.org), click on the Network for Good logo, and follow the instructions.
2. **Regular mail:** fill out the form below and mail it in.
3. **Volunteer:** email our Membership Coordinator at [jane@ellerbecreek.org](mailto:jane@ellerbecreek.org), or call us at 286-2227.

ELLERBE CREEK WATERSHED ASSOCIATION		MEMBERSHIP FORM	
<b>Name</b>	_____		
<b>Address</b>	_____		
<b>Telephone</b>	_____	<b>E-mail</b>	_____
<b>Select Your Membership Level</b>	Regular Membership Levels <input type="checkbox"/> \$25 – Individual <input type="checkbox"/> \$40 – Family Advanced Membership Levels Support Much Needed Staff Positions And Programming! <input type="checkbox"/> \$ 75 <input type="checkbox"/> \$ 100 <input type="checkbox"/> \$ 250 <input type="checkbox"/> \$ _____		
<b>Please check your area(s) of interest:</b>	<input type="checkbox"/> Land preservation <input type="checkbox"/> Fundraising / Grant Research <input type="checkbox"/> Networking / Membership <input type="checkbox"/> Trail Building <input type="checkbox"/> Education	<input type="checkbox"/> Stormwater Runoff Reduction and Utilization <input type="checkbox"/> Wetland Garden / Habitat Restoration / Plant Rescue <input type="checkbox"/> Streamwatch (monitoring water quality and aquatic life) <input type="checkbox"/> Other _____	
Please send this completed form and your membership check to:		Ellerbe Creek Watershed Association P.O. Box 2679 Durham, NC 27705-2679	
ECWA Office Phone Number: 919-286-2227. Membership fees and donations are tax deductible. Financial information about this organization and a copy of its license are available from the State Solicitation Section at 1-888-830-4989. The license is not an endorsement by the State.			

